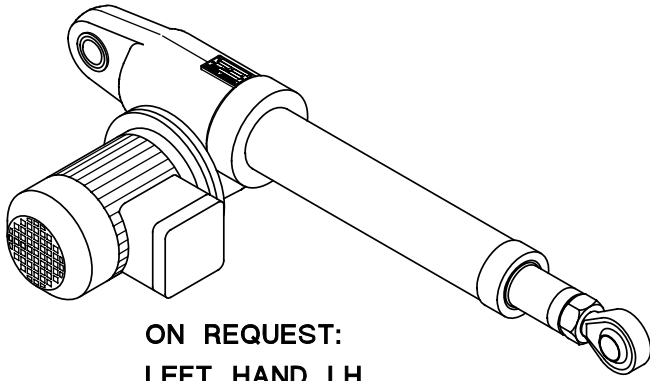
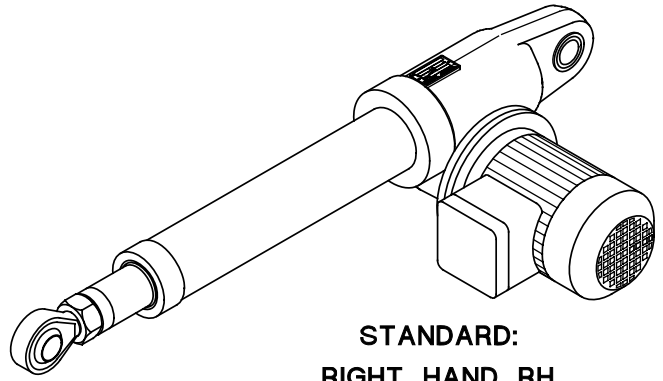


8.1

ELECTRIC MOTOR POSITIONS



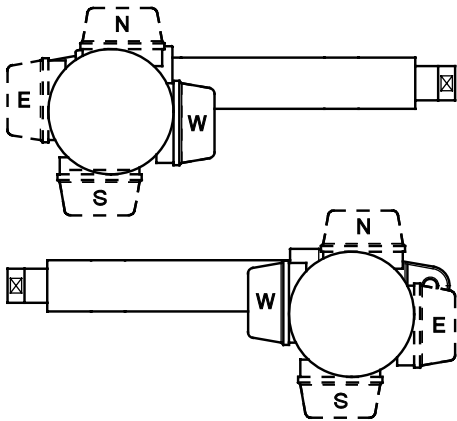
**ON REQUEST:
LEFT HAND LH**



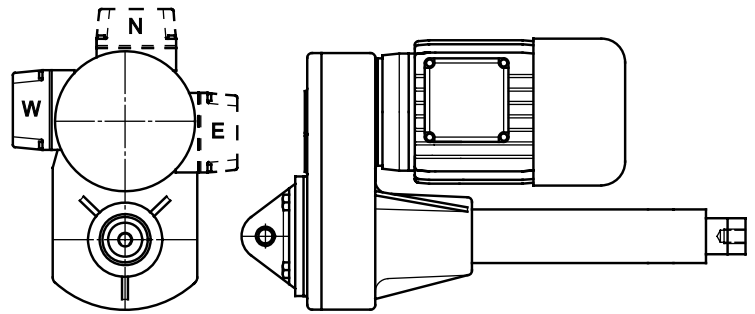
**STANDARD:
RIGHT HAND RH**

ELECTRIC MOTOR TERMINAL BOX POSITION
Series ATL and series BSA

Series UAL and Series UBA



STANDARD SIDE: W
ON REQUEST SIDE: E ; N ; S



STANDARD SIDE: W
ON REQUEST SIDES E ; N

8.2

REAR FIXING ATTACHMENT PIVOT

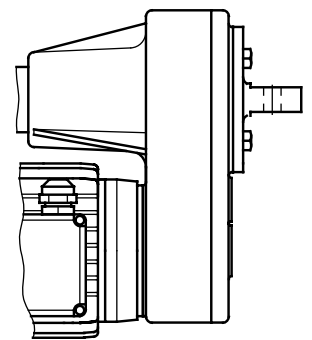
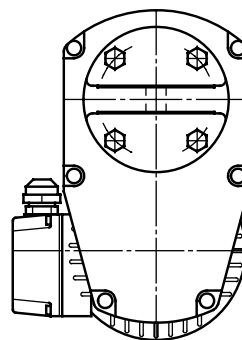
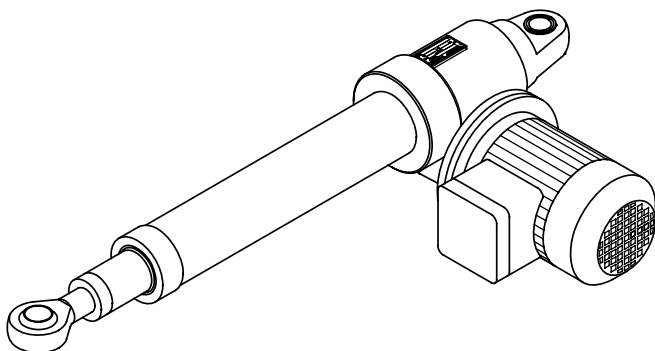
On request rear fixing attachments turned at 90° are available **ORDERING CODE RPT 90°**

Series ATL – BSA

Series UAL – UBA

Sizes: 10 – 20 – 25 – 30 – 40 – 50 – 63

All sizes



8.3
LINEAR ACTUATORS INPUT VERSIONS

Series ATL 20 – 25 – 30 – 40 — Series BSA 20 – 25 – 30 – 40

CODE	DESCRIPTION	CODE	DESCRIPTION
Vers.1	Single input shaft	Vers.2	Double input shaft
Vers.3	Motor flange European standard (IEC B14)	Vers.4	Motor flange European standard (IEC B14) and extended input shaft

	C	C1	C4	E	k	Y	Ød j6	Øm	n
ATL/BSA 20	45	49	135	44	3x3x15	58	9	46	20
ATL/BSA 25	45	49	135	44	3x3x15	58	9	46	20
ATL/BSA 30	50	54	149	52	3x3x15	62	10	54	22
ATL/BSA 40	57	61	179	53	5x5x20	69	14	54	30

	MOTORE FLANGE IEC	ØG	ØM	ØN	ØP	ØW F7	f
ATL/BSA 20	56 B14	5.5	80	65	50	9	12.5
ATL/BSA 25	56 B14	5.5	80	65	50	9	12.5
ATL/BSA 30	63 B14	5.5	90	75	60	11	12
ATL/BSA 40	71 B14	6.5	105	85	70	14	12

Note: Over-all dimensions in millimetres (mm)

CODE	DESCRIPTION	CODE	DESCRIPTION
Vers.1	<p align="center">Single input shaft</p>	Vers.2	<p align="center">Double input shaft</p>
Vers.3	<p align="center">Motor flange European standard (IEC B5)</p>	Vers.4	<p align="center">Motor flange European standard (IEC B5) and extended input shaft.</p>
Vers.5	<p align="center">Motor flange adapter + coupling IEC B14 or IEC B5</p>	Vers.6	<p align="center">Motor flange adapter IEC B14 or IEC B5 and extended input shaft</p>

8.3
LINEAR ACTUATORS INPUT VERSIONS

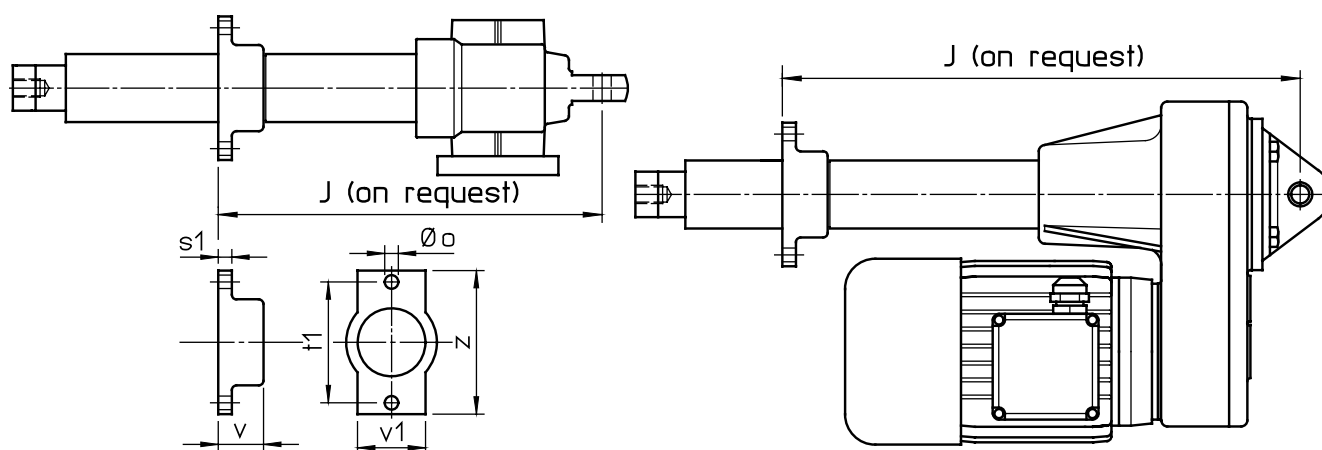
Series ATL 50 – 63 – 80 — Series BSA 50 – 63 – 80

	C1	C2	Y	Y1	Ø G	L	k	Ø d j6	Ø m	n
ATL/BSA 50	136	222	102	182	M5x0.8	102	6x6x30	19	64	40
ATL/BSA 63	165	269	100	220	M6x1	125	8x7x40	24	63	50
ATL/BSA 80	205	330	119	240	M6x1	143	8x7x40	28	74	60

	Motor Flange IEC		Ø H	Ø M		Ø N		Ø P		Ø W		f
ATL/BSA 50	63 B5	71 B5	M8x1.25	140	160	115	130	95	110	11	14	12
ATL/BSA 63	80 B5		M10x1.5	200		165		130		19		12
ATL/BSA 80	80 B5	90 B5	M10x1.5	200		165		130		19	24	12

	Motor Flange adapter IEC	Ø H1	Ø M1	Ø N1	Ø P1	Ø W1	f1
ATL/BSA 50	80 B14 – 80 B5	Ø6.5 – M10x1.5	120 – 200	100 – 165	80 – 130	19	10 – 12
ATL/BSA 63	90 B14 – 90 B5	Ø8.5 – M10x1.5	140 – 200	115 – 165	95 – 130	24	10 – 12
ATL/BSA 80	100 B14 – 100 B5	Ø8.5 – M12x1.75	160 – 250	130 – 215	110 – 180	28	15 – 17

	Motor flange adapter IEC	Ø H1	Ø M1	Ø N1	Ø P1	Ø W1	f1
ATL/BSA 50	90 B14 – 90 B5	Ø8.5 – M10x1.5	140 – 200	115 – 165	95 – 130	24	10 – 12
ATL/BSA 63	100/112 B14 – B5	Ø8.5 – M12x1.75	160 – 250	130 – 215	110 – 180	28	15 – 17
ATL/BSA 80	112 B14 – 112 B5	Ø8.5 – M12x1.75	160 – 250	130 – 215	110 – 180	28	15 – 17

SUPPORT FLANGE FI


	t1	Øo	S1	v	v1	z
ATL/BSA 10	70	9	9	30	40	85
ATL/BSA 20 UAL/UBA 1	70	9	9	30	40	85
ATL/BSA 25 UAL/UBA 2	80	9	9	30	45	95
ATL/BSA 30 UAL/UBA 3	85	9	10	35	50	100
ATL/BSA 40 UAL/UBA 4	100	11	12	45	60	120

Note: Over-all dimensions in millimetres (mm)